

Annual Report 2014-2015



HomeSafe

Preventing | Protecting | Preparing



– Artwork by SafetyNet clients

Board of Directors

2014-2015 Board of Directors

Roberto Vargas
President

Alice Nelson
Vice-President

Steven Bernstein
Treasurer

Gloria D. Pierson
Secretary

Cherie Copenhaver
Past President

Val Perez
President-Elect

Mike Nichols
Member at Large

William Berger
Suzi Goldsmith

Lawrence W. Gonnello

Roy Hinson

Lynn Holcomb

Ward Kellogg

Rex B. Kirby

David M. Layman

Sonny Maken

Diego Rico

Thomas J. Rooney

Richard E. Timmons

HomeSafe

Matthew Ladika
Chief Executive Officer



Dear Friends,

Thank you for taking the time to read about the valuable work HomeSafe has been doing this past year in our community. We are very proud of our accomplishments and the clients we serve. Please know, none of this would be possible without help from supporters like you!

Here are some highlights:

🏠 **For a second year in a row, The Classic Rock and Roll Party shattered its net profit watermark - raising \$420,000!**

🏠 **HomeSafe now has a mobile office, and conducts free screening and assessments across PBC to children newborn to age 5.**

🏠 **In May, our Residential, SafetyNet and LifeSkills programs all converted to electronic medical records.**

🏠 **Lastly, we are expanding our continuum of care to youth 18 – 23 by adding a new program that will provide safe and affordable transitional housing.**

Adding the additional services for young adults has been a dream of ours since 2007. Thanks to several generous donors, this population is going to get the help it so desperately needs.

HomeSafe truly values the community's continued trust and support. The board and staff remain committed to creating safer, more productive lives for infants, children and families.

Sincerely,

Matthew Ladika
Chief Executive Officer

Locations

**Bernstein Family
Foundation Campus**
680 Ipswich Street
Boca Raton, FL 33487

Sylvester Family Campus
4888 N. Haverhill Road
West Palm Beach, FL 33407

**Simon C. Fireman
Foundation Campus**
2840 Sixth Avenue South
Lake Worth, FL 33461

West Palm Beach
1720 East Tiffany Drive, Ste. 201
West Palm Beach, FL 33407

Belle Glade
2990 North Main Street
Belle Glade, FL 33430

(561) 383-9800 www.HelpHomeSafe.org



Help HomeSafe



@HomeSafeFla

Our Mission

Creating safer, more productive lives for infants, children and families.

Who We Are

Since 1979, HomeSafe has been a nationally accredited nonprofit organization protecting Palm Beach County and South Florida's most vulnerable residents – victims of child abuse and domestic violence.

HomeSafe provides comprehensive programs **preventing** new cases of violence, **protecting** victims of child abuse and domestic violence, and **preparing** children and families for safer, more productive lives. Annually, HomeSafe serves more than 16,000 infants, children and families.

Special Thanks To

Mr. & Mrs. James Allen

Alpine Jaguar

The Betty and Leo Balzereit Foundation

Lori Barnett

Steven E. Bernstein Family
Foundation, Inc.

Frank Bevacqua

City of Boca Raton

Community Foundation for Palm
Beach and Martin Counties

Greta Faigen

The Glick Family Foundation

Investments Limited

Jarden Consumer Solutions
Community Fund

Jockey Store – Palm Beach Outlets

Jeffrey Kleiman

Libra Foundation, Inc.

E. M. Lynn Foundation

MacCutcheon Family Foundation

The Jim Moran Foundation, Inc.

Moss Foundation

The Nichols Foundation

Ocean Properties

Order of St. John of Jerusalem,
Knights Hospitaller

Paradise Bank

The Patten Family Foundation

Premier Beverage

Julie and Mark Pulte

Peter Salvatore & Lynn Holcomb

Schmidt Family Foundation

Debbie Lindstrom & Bob Sheetz

The Sidney, Milton and Leoma
Simon Foundation (Florida)

Stoops Family Foundation, Inc.

The Harcourt M. & Virginia W.
Sylvester Foundation, Inc.

TD Charitable Foundation

The Giving Circle - Suffolk
Construction

The Lost Tree Village Charitable
Foundation, Inc.

Town of Palm Beach United Way

United Way of Palm Beach County

Partners

Brevard Family Partnership

Center for Family & Child Enrichment

Charlee of Dade County

ChildNet, Inc.

Children's Home Society

Children's Network of Southwest Florida

Children's Services Council of Palm
Beach County

Children's Village

City of West Palm Beach

Community Based Care of
Central Florida

Community Partnership for Children

Devereaux CBC of Okeechobee
and Treasure Coast

Eckerd

Eckerd – Hillsborough

Family Resource Center

Family Support Services of
North Florida

Heartland for Children

Kids Central

Palm Beach County

Southeast Florida Behavioral
Health Network

Victims of Crime Act

Wesley House





Healthy Beginnings

- 🏠 Healthy Beginnings conducts free developmental assessments for all children under the age of five throughout Palm Beach County. During the 2014-15 fiscal year, more than 2,000 children were screened for their behavioral and social/emotional health to ensure they are ready for kindergarten.
- 🏠 More than 200 portable cribs were distributed to parents in need to ensure their child has a safe place to sleep. Educational materials were also distributed to help educate parents on safe sleep practice.
- 🏠 During our 2014-15 fiscal year, 16,939 babies were born in Palm Beach County. Our hospital liaisons screened 99% of the moms after delivery, for risks including post-partum depression and bonding.
- 🏠 230 families participated in Growing Smart - a voluntary, two-year program that teaches parents about developmental stages and gives parenting tips. A child's development is monitored by the developmental support specialist who will provide a referral, should a concern be discovered.

“I learned about the Healthy Beginnings program after I delivered my daughter. I had just moved here from out-of-state and didn't have a safe place for my newborn to sleep. I was given a portable crib and information about proper sleep techniques. I was also informed of other services that could help me help ensure my daughter reached her developmental milestones.”

– Karina, Healthy Beginnings client

SafetyNet

- 🏠 225 children, teens and adults were enrolled in SafetyNet's weekly therapeutic support groups and services for victims of domestic violence. The average length of participation in the program is 4-6 months.
- 🏠 89 out of 112 teen and adult clients enrolled in SafetyNet demonstrated increased adaptive coping & resiliency skills (using a safety plan, increased self-confidence, working toward self-sufficiency) as determined by pre and post scale assessments.
- 🏠 399 new referrals were provided with intervention and prevention information/services.

I feel safe here to talk about my stuff.

– SafetyNet child client



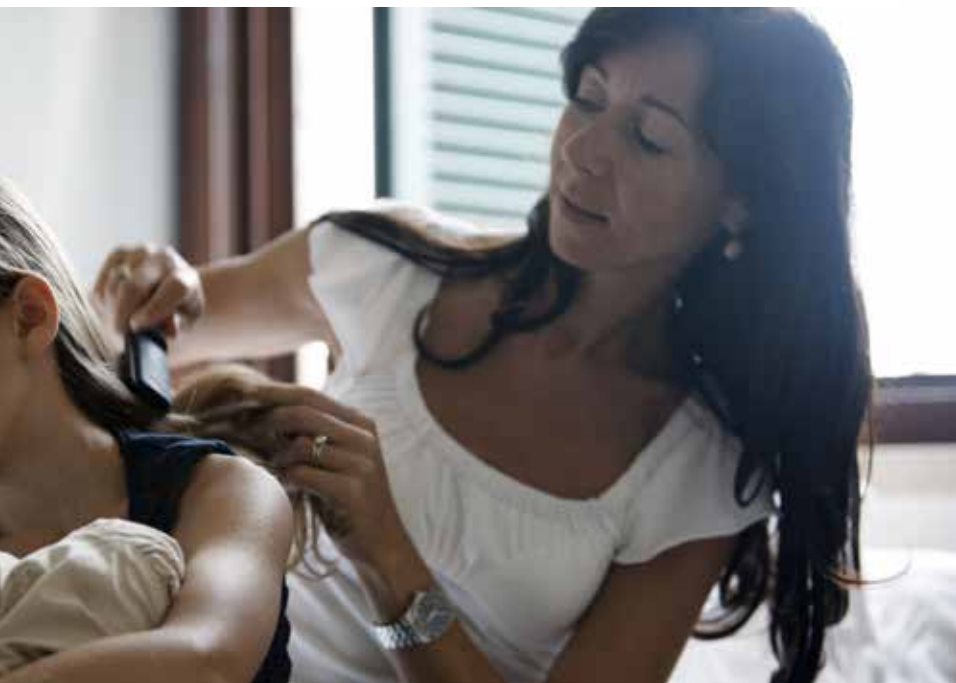
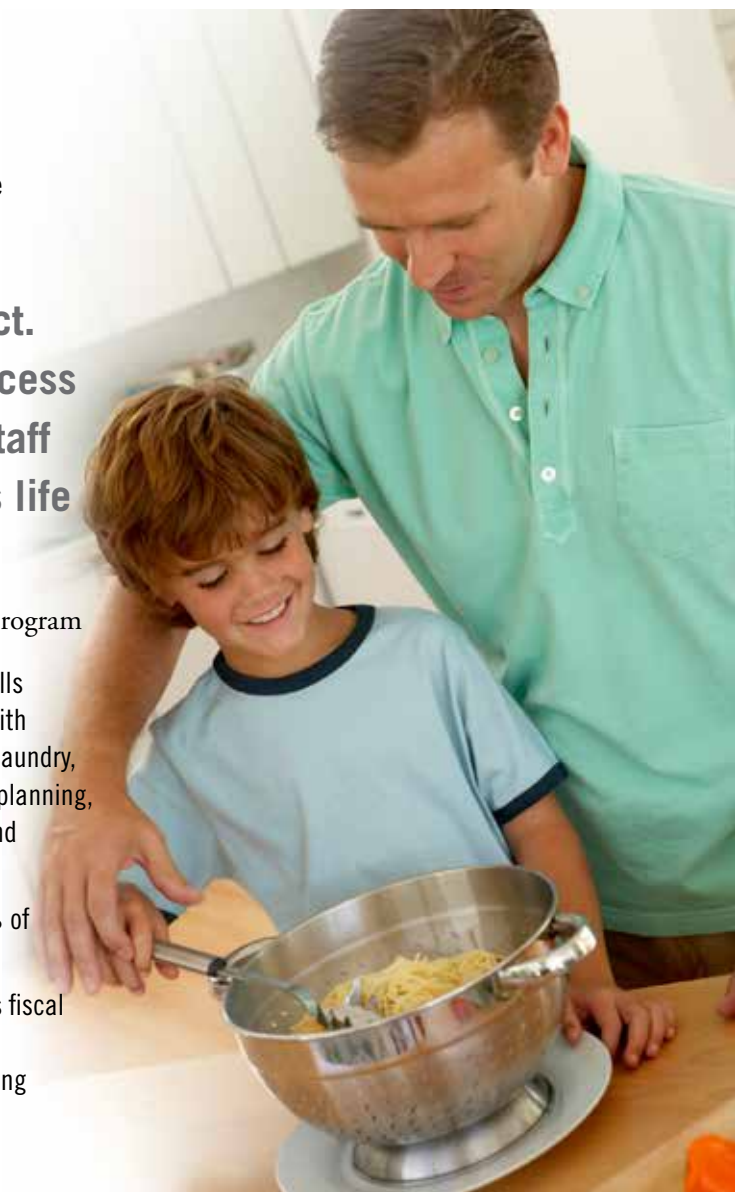
Residential Group Care/ LifeSkills™

- 🏠 During fiscal year 2014-15, a total of 102 girls and boys, ages 8 – 17, received full-time care and treatment services at five home-like group homes located in Boca Raton, Lake Worth and West Palm Beach.
- 🏠 Six of the eight clients who aged out of our residential program (during the fiscal year), are currently enrolled in high school, college and/or working. All are maintaining safe and stable housing.

They listened to him. They showed him respect. They showed him dignity. Because of that process and the therapy, and the time and love from staff that showed they cared, I think it changed his life and brought us back together.

– Susan, whose son graduated from the residential program

- 🏠 All of the 48 clients in our residential group care are enrolled in our LifeSkills program. Twice a week, clients attend group trainings that provide them with the knowledge and tools they will need for independent living – how to do laundry, keeping a clean room, personal hygiene, shopping & cooking, educational planning, using community services, applying for a job, etc. Clients are tested pre and post-training. Clients consistently increased their scores by 20% or more.
- 🏠 On the last day of school, of the 45 clients in our residential program, 98% of them were promoted to the next grade level.
- 🏠 On average, the amount of time a client stayed in the program (during this fiscal year) before being discharged was 9 months. Of the 57 clients discharged during the fiscal year, 31 were planned discharges, with 27 of those stepping down to a lower level of care.



Through this program, I have learned to recognize the signs and it has helped me be a stronger individual with set boundaries.

– SafetyNet adult client

Statement of Financial Position

As of June 30, 2015

Unaudited

Assets	
Cash and cash equivalents	\$ 191,808
Accounts receivable	774,510
Pledges receivable	271,627
Prepaid expenses	10,021
Property and equipment, net	7,160,388
Split interest agreements	364,054
Deposits	7,445
Investments, at market	2,391,355
Total Assets	\$ 11,171,208
Liabilities and Net Assets	
Accounts payables	97,025
Accrued expenses	369,229
Total liabilities	466,254
Total net assets	10,704,954
Total Net Assets and Liabilities	\$ 11,171,208

Statement of Financial Activities

Fiscal Year Ended June 30, 2015

Unaudited

Revenue and Support	
Program services	\$ 6,497,599
Grants	604,387
Contributions	343,794
Special events revenue, net	591,846
Investment income/loss	20,617
Total Revenue and Support	\$ 8,058,243
Expenses	
Program services expenses	\$ 7,169,528
Management and general	623,437
Fundraising	361,559
Total expenses	8,154,524
Change in net assets	(96,281)
Net assets, beginning of year	\$ 10,801,235
Net assets, end of year	\$ 10,704,954

Expense Allocations



7%
Administrative



6%
Fund raising



87%
Program Services

HomeSafe Events

The Classic Rock & Roll Party

The 2015 Classic Rock and Roll Party was a great night of music and fun for the 360 guests that attended this annual fund raiser held at the Seminole Hard Rock Hotel and Casino. Congratulations to *our host Nicko McBrain, and Co-Chairs Debora Kellogg and Jayne Malfitano* for all their hard work and dedication which raised a record-breaking \$420,000 for HomeSafe programs and services.

Thank You to Our Sponsors

Diamond Presenting

Paradise Bank
Seminole Hard Rock Hotel & Casino
The Harcourt M. &
Virginia W. Sylvester Foundation

Platinum

The Nichols Foundation
Premier Beverage
Kathy Walsh & Jim MacCutcheon

Gold

Alpine Jaguar
James & Marta Batmasian
J. nessa
Moss Foundation
Ocean Properties
Schmidt Family Foundation
Debbie Lindstrom & Bob Sheetz
Steven E. Bernstein Family Foundation, Inc.
Stoops Family Foundation

**Mark your calendar for February 6 for the
2016 Classic Rock & Roll Party!**



Mason Golf Tournament

In October, Boynton Lodge No. 236, F. & A.M., hosted its charity golf outing to support HomeSafe at The Links of Boynton Beach. The more than \$10,000 raised was used for renovations in our Libra Girls group home in Lake Worth.

**Another great day of golf is
set for October 24, 2015!**



Jump For HomeSafe

On January 10, HomeSafe hosted its *5th Annual Jump For HomeSafe* event at the Palm Beach International Equestrian Center. Hannah Patten, Lillie Keenan and Samantha Wight, competitive riders on the circuit, served as the event co-chairs.



More than 80 guests enjoyed premier ringside seating and dining for the world-class equestrian “Battle of the Sexes” competition. The evening raised more than \$39,000 for programs and services.

Thank you to Our Sponsors

The Patten Family Foundation
Steven E. Bernstein Family Foundation
J. nessa
The Nichols Foundation
The Wight Foundation
Keenan Family
Stepping Stone Farm
Fraternal Order of Eagles 3694
20/Twenty Eyecare

**Join us for the 6th Annual
Jump For HomeSafe on January 16, 2016**



HomeSafe

2840 Sixth Avenue South
Lake Worth, FL 33461

NON-PROFIT ORG
US POSTAGE
PAID
WEST PALM BEACH, FL
PERMIT No. 1076

We Are Growing in 2015!



The Steven E. Bernstein Family Foundation has given HomeSafe a \$500,000 challenge grant to be used for a new Independent Living Housing Program. The program will provide affordable housing and services for clients who have turned 18, and by law, have to “age out” of the agency’s residential group care program. The program will start in October 2015.

“For years, The Bernstein Family Foundation has supported the invaluable services HomeSafe provides victims of child abuse and neglect,” said Steven E. Bernstein, president of the Foundation. “We are so excited to put our support behind this new housing

program which is desperately needed in our community. Clients who have turned 18 and technically must leave the program, will have a safe and affordable place to live as they transition into this new phase of their life, adulthood.”

The total cost of this new program is \$1 million. An endowment of \$250,000 will be put into place for the perpetuity of the program. HomeSafe has purchased a piece of property in Lake Worth which includes 12 one-bedroom, one-bath apartments. Clients will pay a minimal monthly rent, of which, \$100 will be put into escrow for the client for future housing needs. In order to participate in the program, clients will be required to maintain their PESS eligibility (Postsecondary Education Services & Support provided by the state), and follow the rules set by HomeSafe. HomeSafe’s Transition Specialist (who works at the Lake Worth campus) will continue to work with the clients, reinforcing the lessons learned while they were enrolled in the residential program.

“For years we have wanted to extend our support to clients transitioning out due to age,” said Matthew Ladika, HomeSafe CEO. “Thanks to The Bernstein Family Foundation, we will now be able to do that. This brings added support to a client successfully taking this step to adult life and its responsibilities.”